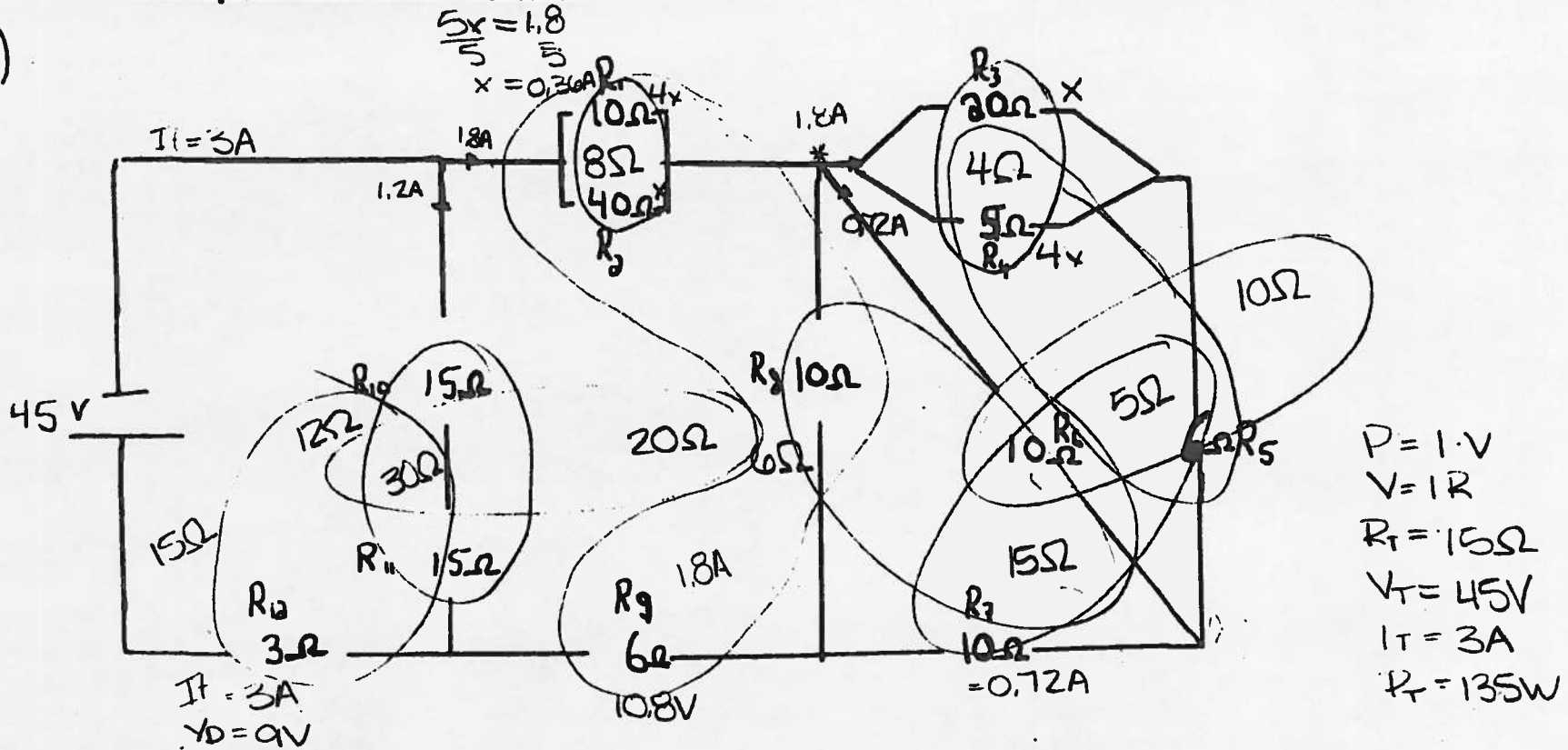


# Exemple de circuit complexe

(A)

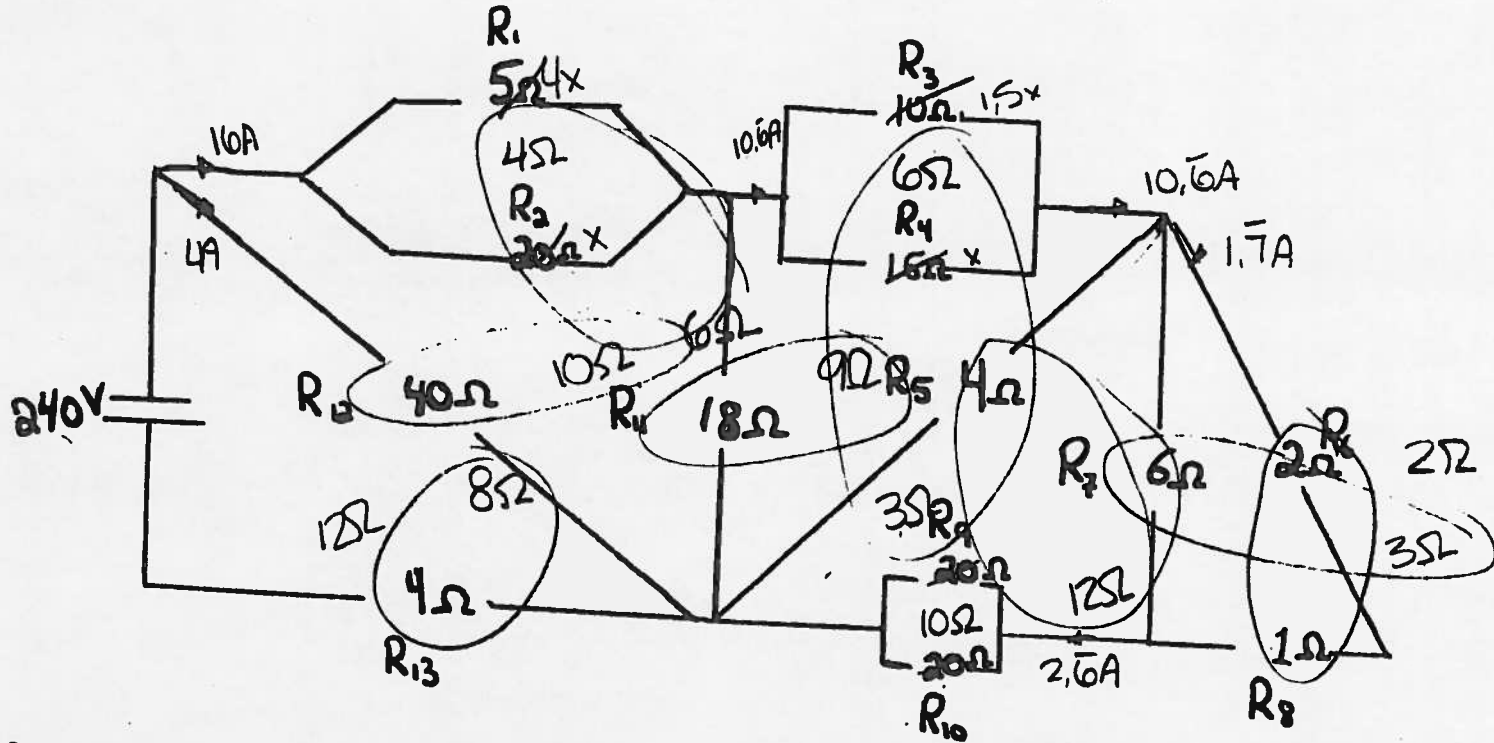


	1	2	3	4	5	6	7	8	9	10	11	12
R	10Ω	40Ω	20Ω	5Ω	6Ω	10Ω	10Ω	10Ω	6Ω	15Ω	15Ω	3Ω
I	1.44A	0.36A	0.072A	0.288A	0.36A	0.36A	0.72A	1.08A	1.8A	1.2A	1.2A	3A
V	14.4V	14.4V	1.44V	1.44V	2.16V	3.6V	7.2V	10.8V	10.8V	18V	18V	9V
P	20.736W	5.184W	0.10368W	0.41472W	0.7776W	1.296W	5.184W	11.664W	19.44W	21.6W	21.6W	27W

(B)

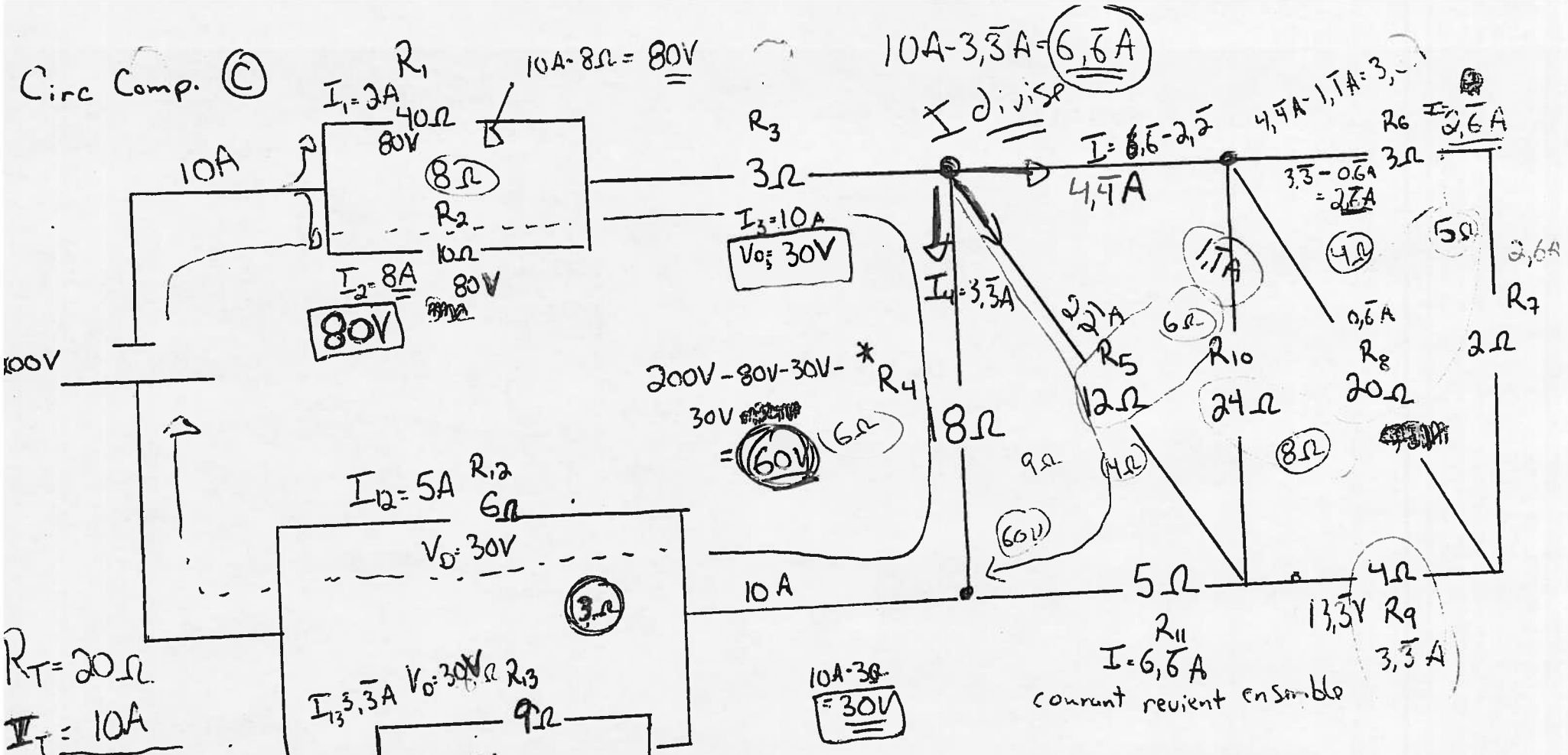
$P = I \cdot V$   
 $V = I \cdot R$

$= 12\Omega$   
 $= 20A$   
 $= 240V$   
 $=$



	1	2	3	4	5	6	7	8	9	10	11	12	13
R	5Ω	20Ω	10Ω	15Ω	4Ω	25Ω	6Ω	1Ω	20Ω	20Ω	18Ω	40Ω	4Ω
I	12.8A	3.2A	6.4A	4.26A	8A	1.7A	0.8A	1.7A	1.3A	1.3A	5.3A	4A	20A
V	64V	64V	64V	64V	32V	3.5V	5.3V	1.7V	20.6V	26.6V	96V	160V	80V
P	819.2W	204.8W	409.6W	273.06W	256W	6.32W	4.740W	3.16W	35.55W	35.55W	512W	640W	160W

Circ Comp. ©



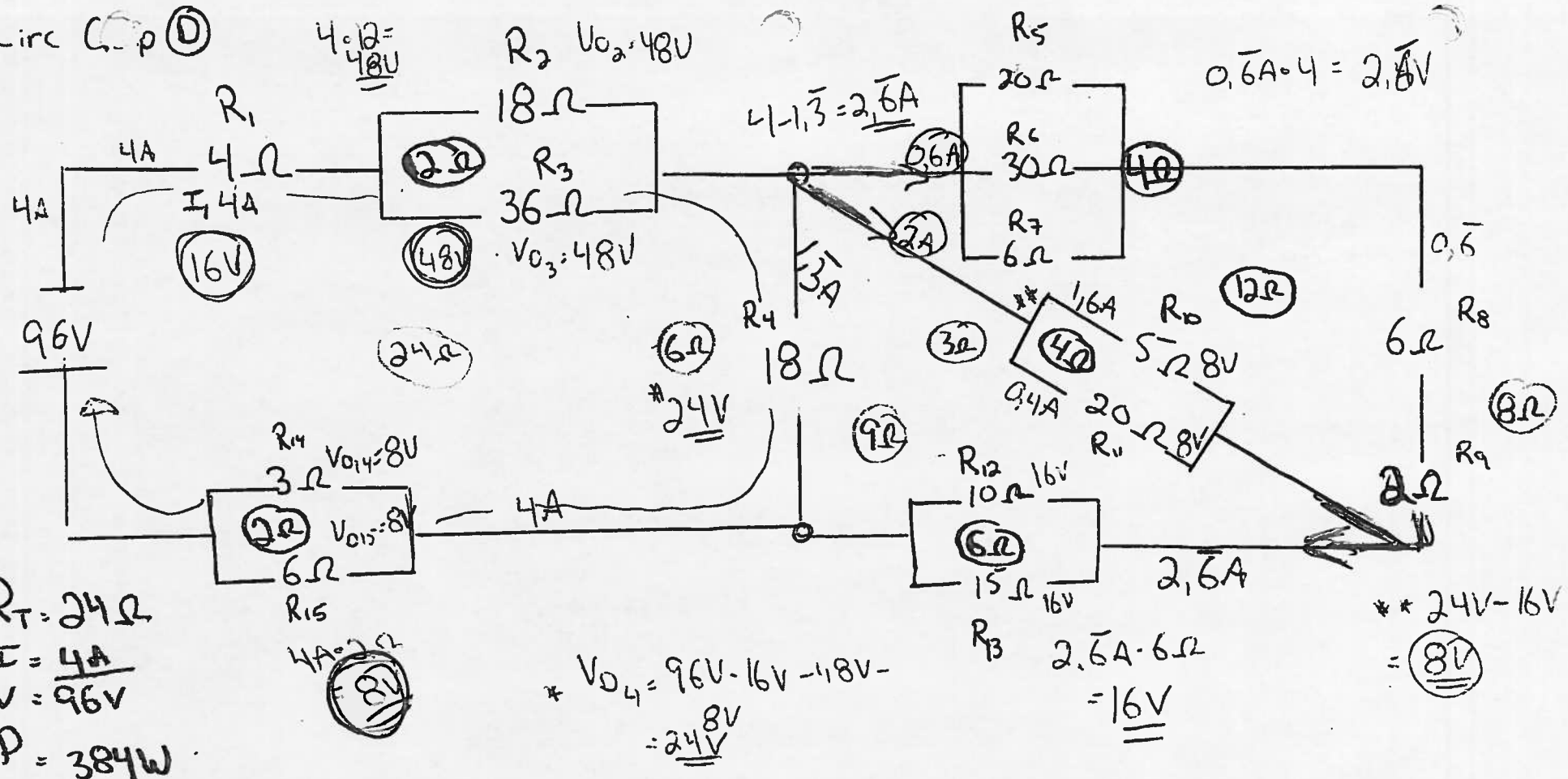
$R_T = 20 \Omega$   
 $I_T = 10A$   
 $V_T = 200V$   
 $P = 2000W$

$I_{13} = 3.3A$   $V_0 = 30V$   $R_3$   
 $I_{14} = 1.6A$   $V_0 = 30V$   $18\Omega$

	1	2	3	4	5	6	7	8	9	10	11	12	13	14
R	40Ω	20Ω	3Ω	18Ω	12Ω	3Ω	2Ω	20Ω	4Ω	24Ω	5Ω	6Ω	9Ω	18Ω
I	2A	8A	10A	* 3.33A	2.2A	2.6A	2.6A	0.6A	3.3A	1.1A	6.6A	5A	3.3A	1.6A
V	80V	80V	30V	60V	26.6V	8V	5.3V	13.3V	13.3V	26.6V	33.3V	30V	30V	30V
P	160W	640W	300W	200W	59.26W	21.3W	14.22W	8.89W	44.44W	29.63W	222.22W	150W	100W	50W

2000W ✓

circ C-p ①



$R_T = 24\Omega$   
 $I = 4A$   
 $V = 96V$   
 $P = 384W$

$* V_{04} = 96V - 16V - 18V = 24V$

$** 24V - 16V = 8V$

	1	2	3	4	5	6	7	8	9	10	11	12	13	14	15
R	4Ω	18Ω	36Ω	18Ω	20Ω	30Ω	6Ω	6Ω	2Ω	5Ω	20Ω	10Ω	15Ω	3Ω	6Ω
I	4A	2.6A	1.3A	1.3A	0.13A	0.08A	0.4A	0.6A	0.6A	1.6A	0.4A	1.6A	1.6A	2.6A	1.3A
V	16V	48V	48V	24V	2.6V	2.6V	2.6V	4V	1.3V	8V	8V	16V	16V	8V	8V
P	64W	128W	64W	32W	0.3556W	0.237W	1.185W	2.6W	0.8W	12.8W	3.2W	25.6W	17.07W	21.3W	10.6W